

# SAFÚME

Wood Wall Watch Collection



SAFUME



## Product Information

- Our product is made of wood and plexiglass materials.
- Consists of 2 layers.
- Total thickness is 7 mm.
- Laser cut method.
- A holder is attached to watch to keep it flat on the wall.
- It has a silent quartz flow mechanism.



SAFUME



### Product Information

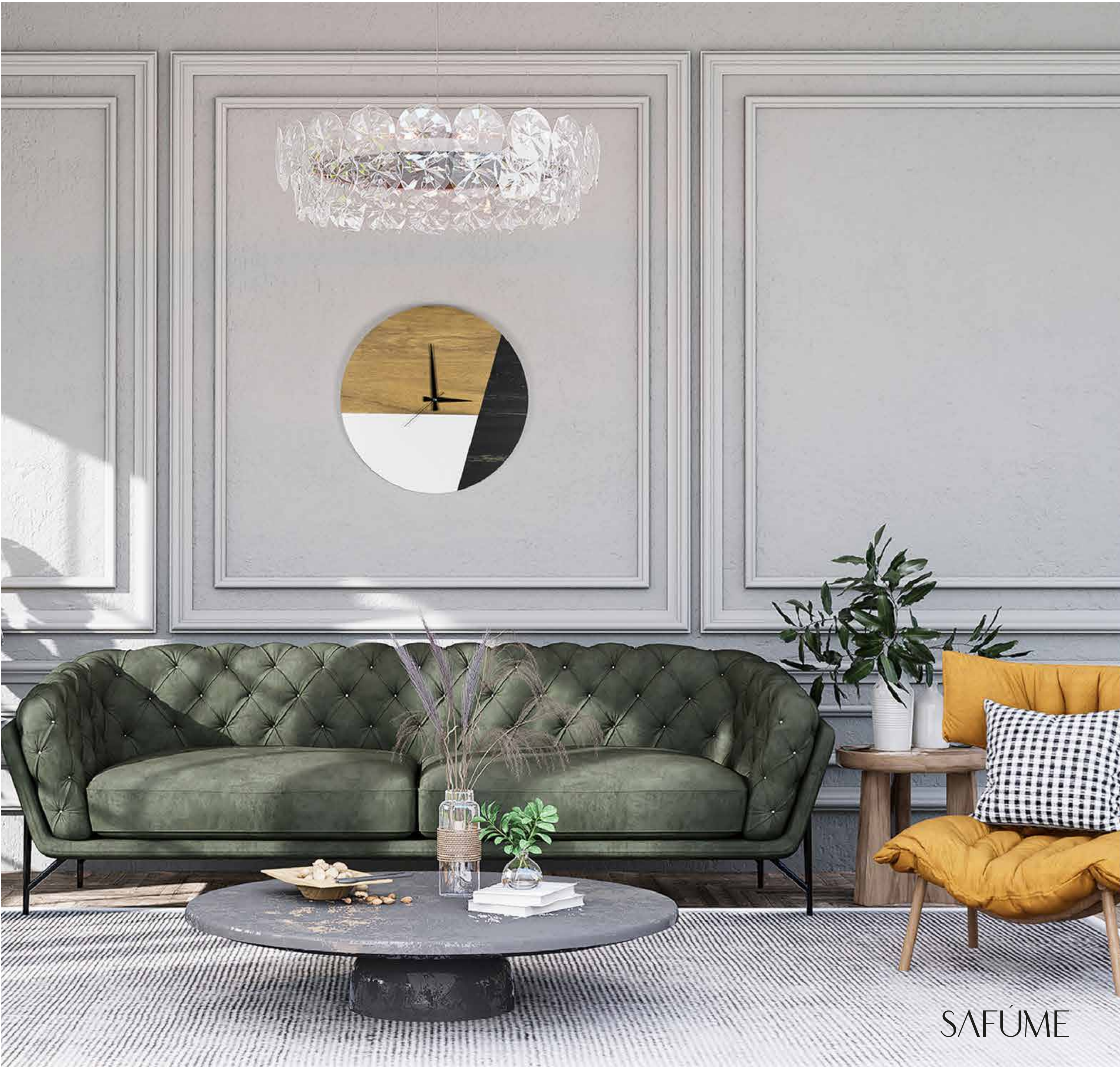
- Our product is made of wood material.
- Consists of 3 layers.
- Total thickness is 9 mm.
- Laser cut method.
- A holder is attached to watch to keep it flat on the wall.
- It has a silent quartz flow mechanism.



### Product Information

- Our product is made of wood material.
- Consists of 2 layers.
- Total thickness is 6 mm.
- Laser cut method.
- A holder is attached to watch to keep it flat on the wall.
- It has a silent quartz flow mechanism.

SAFÚME

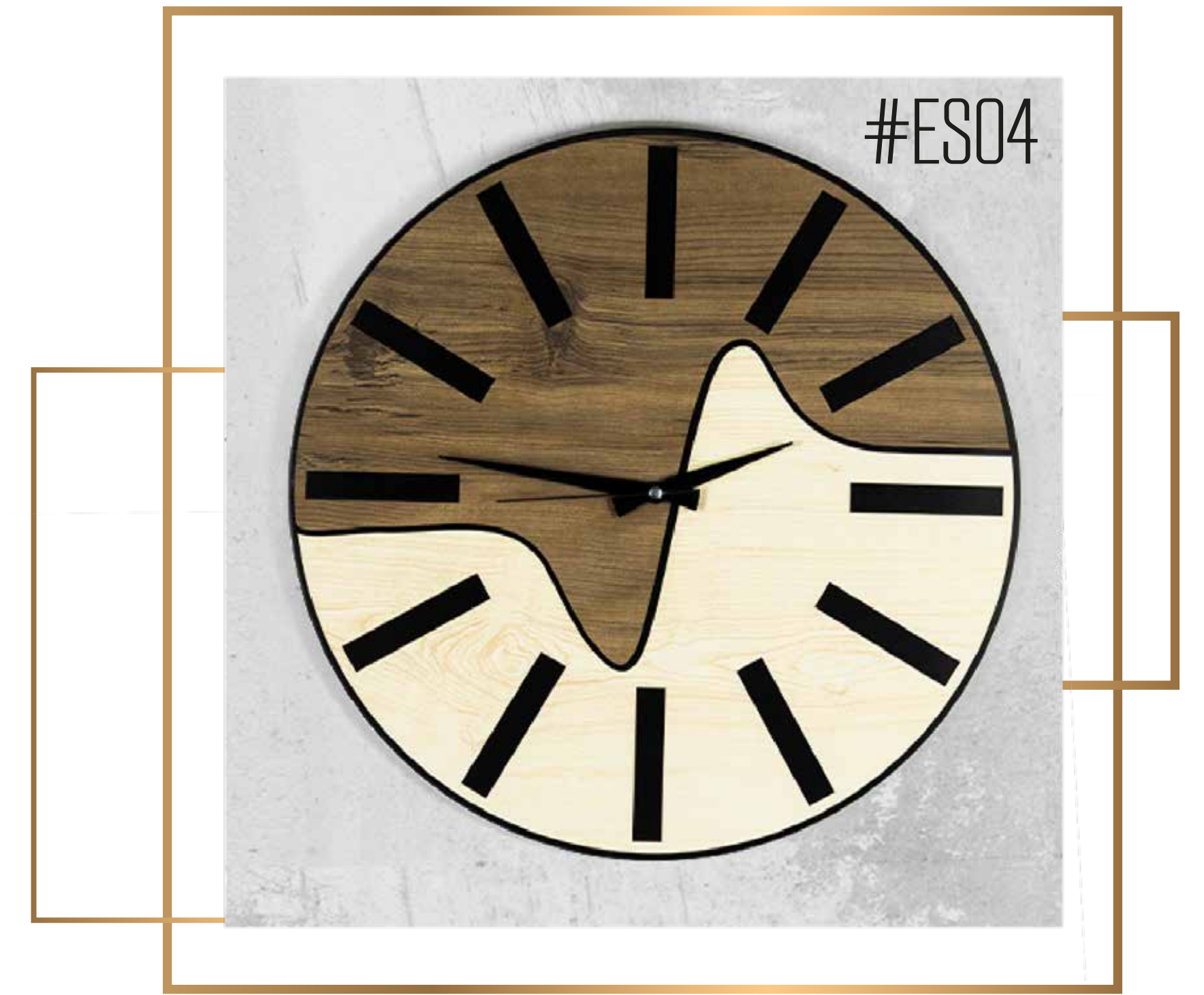
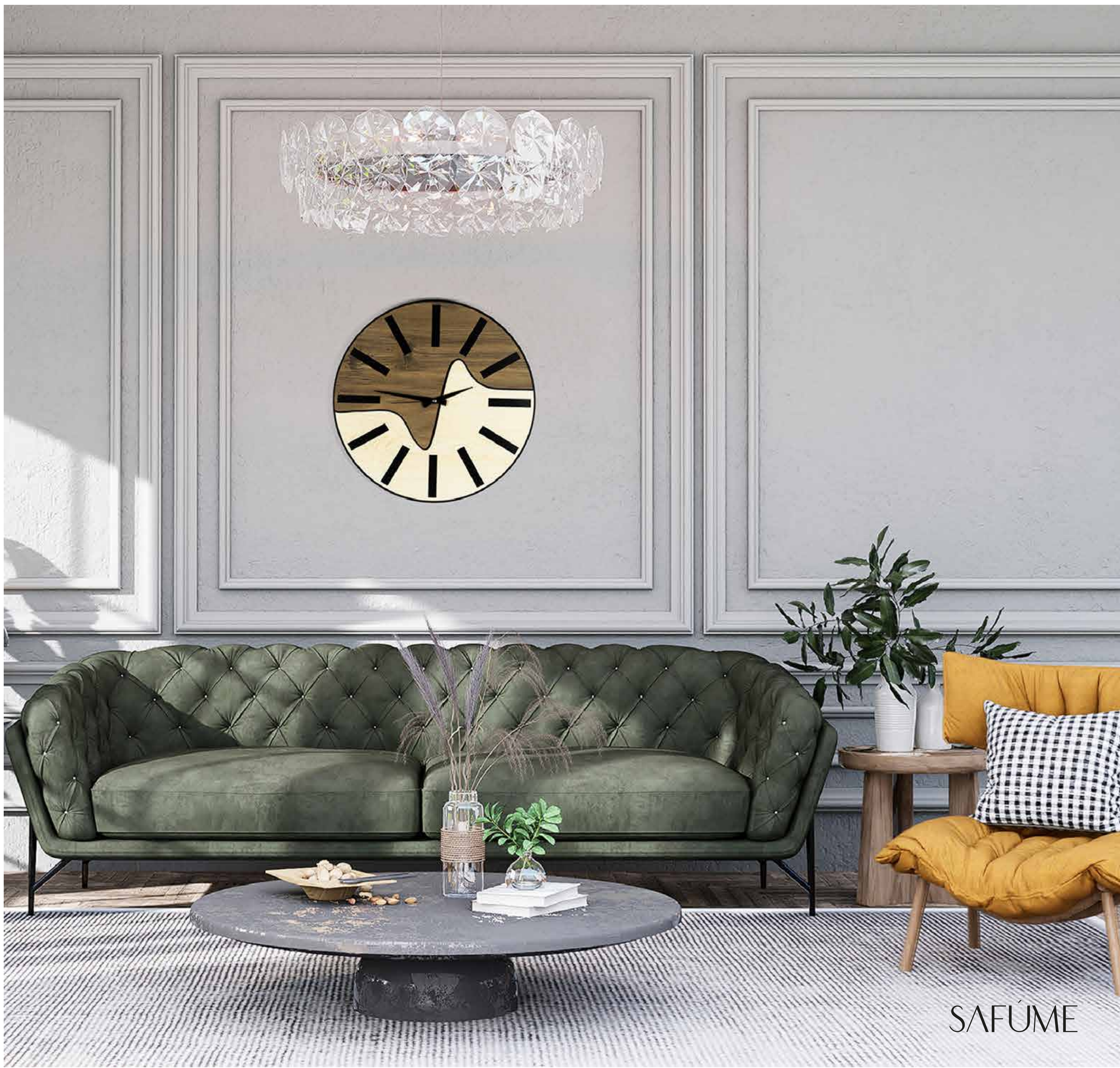


SAFUME



## Product Information

- Our product is made of wood material.
- Consists of single layer.
- Total thickness is 6 mm.
- Laser cut method.
- A holder is attached to watch to keep it flat on the wall.
- It has a silent quartz flow mechanism.



### Product Information

- Our product is made of wood material.
- Consists of single layer.
- Total thickness is 6 mm.
- Laser cut method.
- A holder is attached to watch to keep it flat on the wall.
- It has a silent quartz flow mechanism.

SAFUME



SAFUME



### Product Information

- Our product is made of wood material.
- Consists of 3 layer.
- Total thickness is 9 mm.
- Laser cut method.
- A holder is attached to watch to keep it flat on the wall.
- It has a silent quartz flow mechanism.



SAFUME



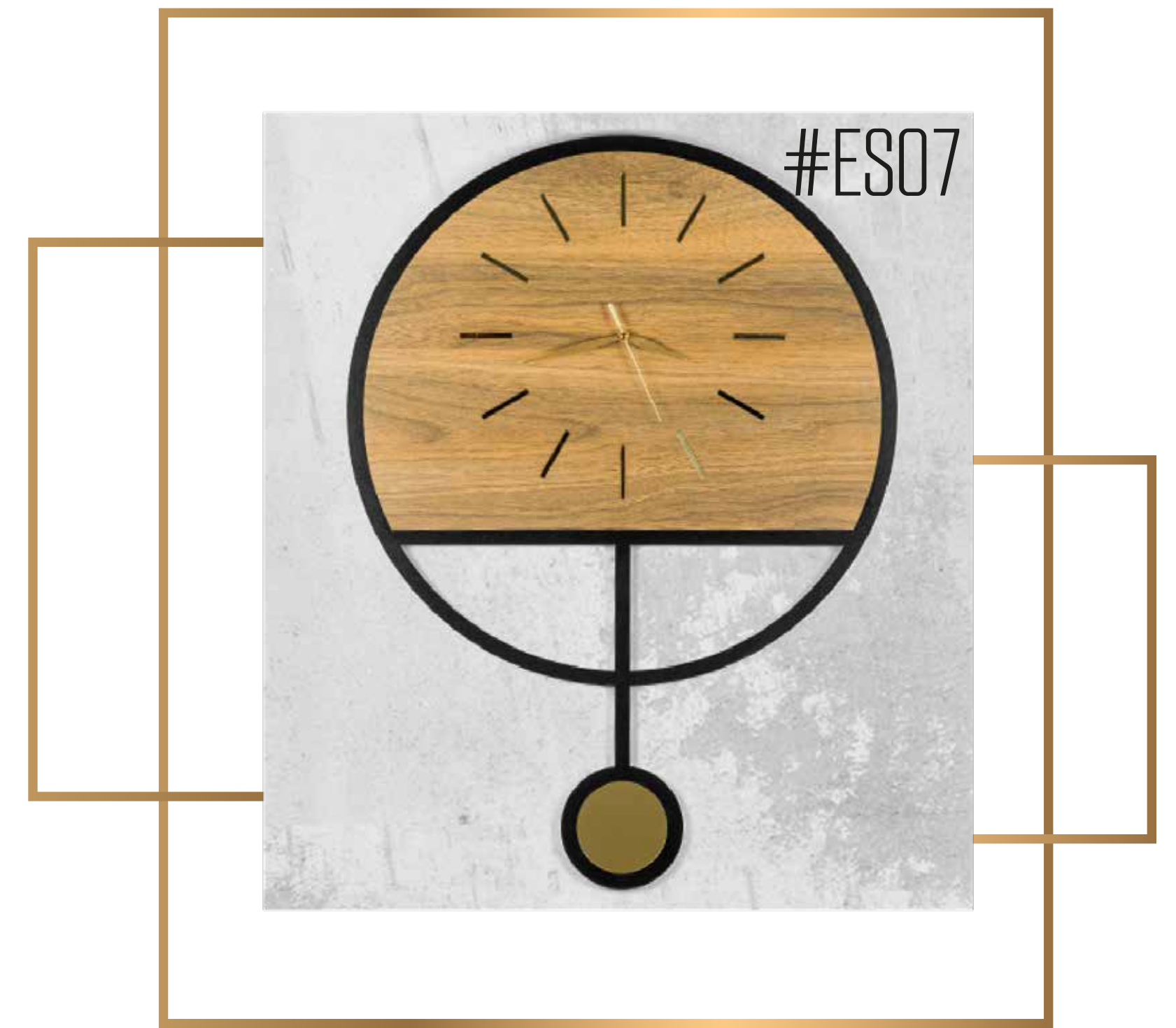
### Product Information

- Our product is made of wood material.
- Consists of 3 layers.
- Total thickness is 9 mm.
- Laser cut method.
- A holder is attached to watch to keep it flat on the wall.
- It has a silent quartz flow mechanism.





SAFUME



## Product Information

- Our product is made of wood material.
- Consists of 2 layers.
- Total thickness is 6 mm.
- Laser cut method.
- A holder is attached to watch to keep it flat on the wall.
- It has a silent quartz flow mechanism.



SAFÚME



## Product Information

- Our product is made of wood and mirrored plexiglass materials.
- Consists of 2 layers.
- Total thickness is 7 mm.
- Laser cut method.
- A holder is attached to watch to keep it flat on the wall.
- It has a silent quartz flow mechanism.



SAFUME



## Product Information

- Our product is made of wood and plexiglass materials.
- Consists of 4 layers.
- Total thickness is 10 mm.
- Laser cut method.
- A holder is attached to watch to keep it flat on the wall.
- It has a silent quartz flow mechanism.



SAFÚME



## Product Information

- Our product is made of silver plexiglass material.
- Consists of 2 layers.
- Total thickness is 7 mm.
- Laser cut method.
- A holder is attached to watch to keep it flat on the wall.
- It has a silent quartz flow mechanism.



## Product Information

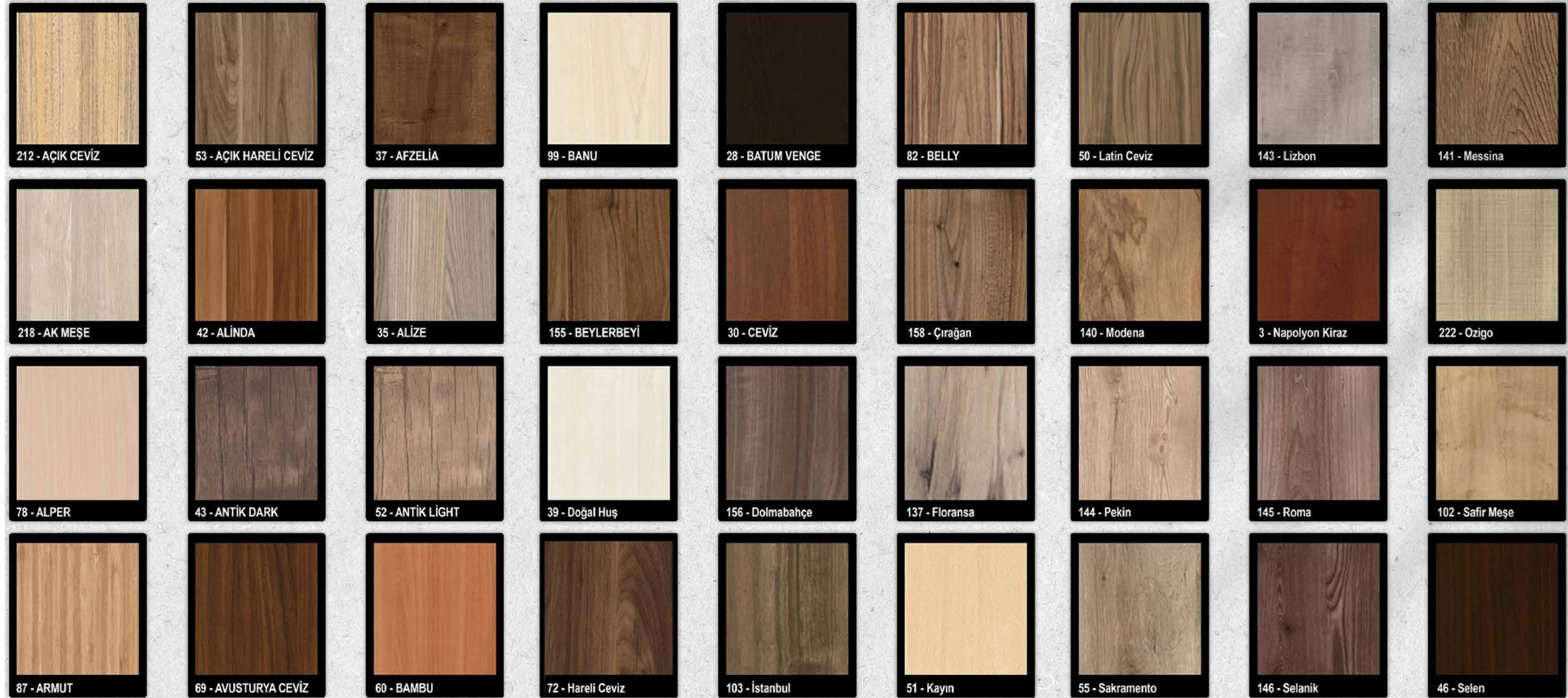
- Our product is made of wood material.
- Consists of multi layers.
- Total thickness is 9 mm.
- Laser cut method.
- A holder is attached to watch to keep it flat on the wall.
- It has a silent quartz flow mechanism.



## Product Information

- Our product is made of wood material.
- Consists of multi layers.
- Total thickness is 6 mm.
- Laser cut method.
- A holder is attached to watch to keep it flat on the wall.
- It has a silent quartz flow mechanism.

# Wood Options





You can choose the wooden decor you want for the clock model.



SAFÚME  
*collection*

All Rights Reserved.



<http://www.safume.com/>



@safume.collection



safumecollection